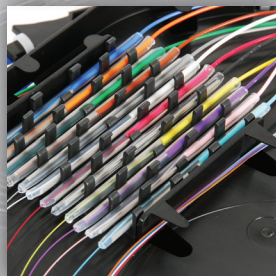
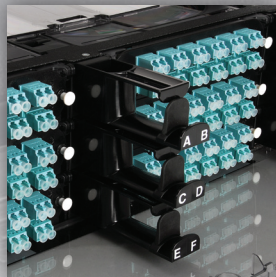


CCH-04U Features

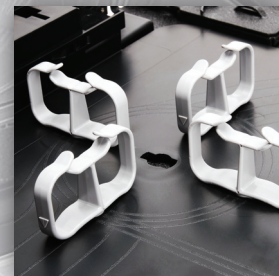
- Snap-on external and internal strain-relief brackets allows you to strain relieve the cables before attaching to the housing in-rack
- Slotted mounting brackets allows a single person to seat the housing in the rack for installation
- The internal strain relief can be moved to accommodate cable entry from either side of the housing
- The top cover removes without tools, making it easier to work inside
- The separable rear housing allows you to work in the housing on a separate work surface prior to installation
- The interior is painted platinum, reflecting ambient light for better visibility in the housing
- The see-through door allows instant visibility for inspection and troubleshooting without disturbing the housing
- Segmented routing guides keep fiber bundles segregated, and can be reconfigured to meet routing needs
- The rear door is designed to secure slack cable within the housing
- The removable front enclosure allows unimpeded access to the connectors
- Snap-in jumper guides allow for more flexibility of jumper management, and are tapered to maximize visibility to ports
- Molded jumper opening reduces dust ingress, while maintaining the jumper bend radius
- Multiple port labeling locations are available within the housing, with downloadable label templates
- Splice within the housings using easy-to-use splice cassettes
- Like all LANscape® Solutions hardware, the CCH Hardware family accepts the CCH panels you already use today for universal fit
- In stock in the largest fiber optic distribution inventory in North America

CCH FIBER OPTIC HARDWARE *features and benefits*



*To innovate,
sometimes you have to*

**THINK
INSIDE
THE BOX**



Corning Cable Systems worked with customers to develop our most feature-rich, intuitive fiber optic hardware. The CCH Hardware Family anticipates virtually every customer challenge and addresses it, making termination and management of your fiber optic connectivity faster, easier and more intuitive.

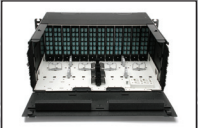
CORNING
LANscape®
Solutions

CCH-04U



Slack storage on rear door

Snap-in external strain-relief bracket



Tool-less, removable rear cover

Separable rear housing



Removable front enclosure

Slotted mounting brackets

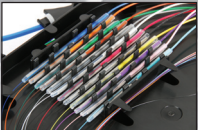
Accepts standard CCH panels



Multiple label options



Adaptable internal strain relief



Room to splice inside (288 F capacity)



Segmented fiber routing guides

Molded jumper opening

Platinum-painted interior

Tapered jumper routing guides

Removable, see-through polycarbonate door

Nationwide Availability

CORNING

CCH-01U (and CCH-02U, 03U)

Accepts standard CCH panels

Slotted mounting brackets



Sliding tray

Molded finger jumper guides



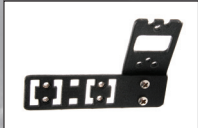
Segmented fiber routing guides

See-through polycarbonate removable top covers



Dust cap storage

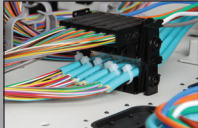
See-through polycarbonate door



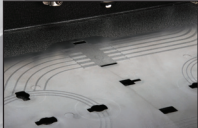
Angled external strain-relief bracket



Room to splice inside



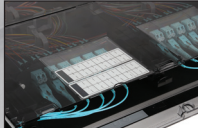
Intermediate strain relief



Molded-in routing illustrations



Adaptable internal strain relief



Multiple label options

Nationwide Availability

CORNING

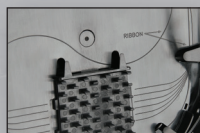
CCH-01U (and CCH-02U, 03U) Features

- The external and internal strain-relief brackets create flexibility for cable attachment
- The internal strain relief can be moved to accommodate cable entry from either side of the housing
- Slotted mounting brackets seat the housing in the rack for one-person installation
- Intermediate strain relief secures transition from subunits or buffer tubes to 900 μ m fiber and allows easy access to individual units during troubleshooting
- The see-through door allows instant visibility for inspection and troubleshooting without disturbing the housing
- See-through and removable top covers make it easier to work inside the housing
- The CCH-01U's shelf slides out front or rear, for easy access to connections even in the top of the rack
- Sliding tray's bathtub design protects fibers from being pinched when tray moves
- The floor of the housing has molded-in illustrations for proper fiber routing regardless of installer skill level
- Segmented routing guides keep fiber bundles segregated, and can be reconfigured to meet routing needs
- Jumper guides have molded fingers that protect jumpers from macrobending
- Splice within the housings using compact, easy-to-use splice cassettes
- Multiple port labeling locations are available at the front of the housing, with downloadable label templates available
- Like all LANscape® Solutions hardware, the CCH Hardware family accepts the CCH panels you already use today for universal fit
- In stock in the largest fiber optic distribution inventory in North America

Splice Cassettes (CCH-CS) Slack Cassettes (CCH-CF)



Built-in splice tray (CCH-CS)



Molded-in routing instructions (CCH-CS)



Bottom slack basket



Comes complete with all components to install within any CCH housing



PET blister pack packaging

Pigtail cassette option available

Accepts standard CCH panels

See-through cover

Splice Cassettes Features

- Cassettes are packaged in individual, recyclable, easy-open PET blister packs
- A see-through cover allows instant visibility for inspection of fiber routing and splices
- A built-in splice tray (CCH-CS) provides both splice protection and management in a compact footprint
- Both the splice and slack cassette (used for direct termination) contain a tray for proper slack management within the cassette
- Molded-in illustrations ensure proper routing within the cassette regardless of installer skill level
- A fully terminated pigtail cassette is available for the fastest, easiest splice option
- Like all LANscape® Solutions hardware, they use standard CCH Panels

Corning Cable Systems LLC • PO Box 489 • Hickory, NC 28603-0489 USA

800-743-2675 • FAX: 828-325-5060 • International: +1-828-901-5000 • www.corning.com/cablesystems

Corning Cable Systems reserves the right to improve, enhance and modify the features and specifications of Corning Cable Systems products without prior notification. LANscape is a registered trademark of Corning Cable Systems Brands, Inc. All other trademarks are the properties of their respective owners. Corning Cable Systems is ISO 9001 certified. © 2011 Corning Cable Systems. All rights reserved. Published in the USA. LAN-1385-EN / December 2011

CORNING